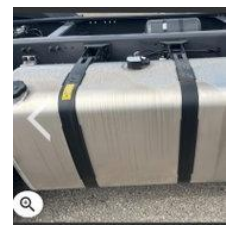
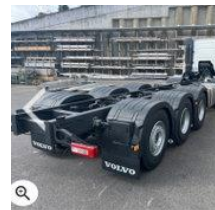




Volvo FMX 500 10x4 Twin Steer Chassis E6e - 2 UNITS - NEW/ UNUSED - Directly available

General characteristics

Brand	Volvo
Model	FMX 500
Subcategory	Chassis cab
Meter reading	500km
Colour	Wit
Fuel	Diesel
Emission class	Euro 6



Properties

Single weight	12.300kg
GVW	54.000kg
Length	1.200cm
Width	250cm
Cabin	Nee
Cylinder capacity	12.800cc

Volvo FMX 500 10x4 Twin Steer Chassis E6e - 2 UNITS - NEW/ UNUSED - Directly available

Technical specifications

Number of axes	5
Axis configuration	10x4
Transmission	Automatic
Assets	500hp

Accessories

- Anti-lock braking system
- Air conditioning
- Leaf spring suspension
- PTO